

2KXN] ?Z =MY^VKXN =_
1DWLRQDO UHVXOWV

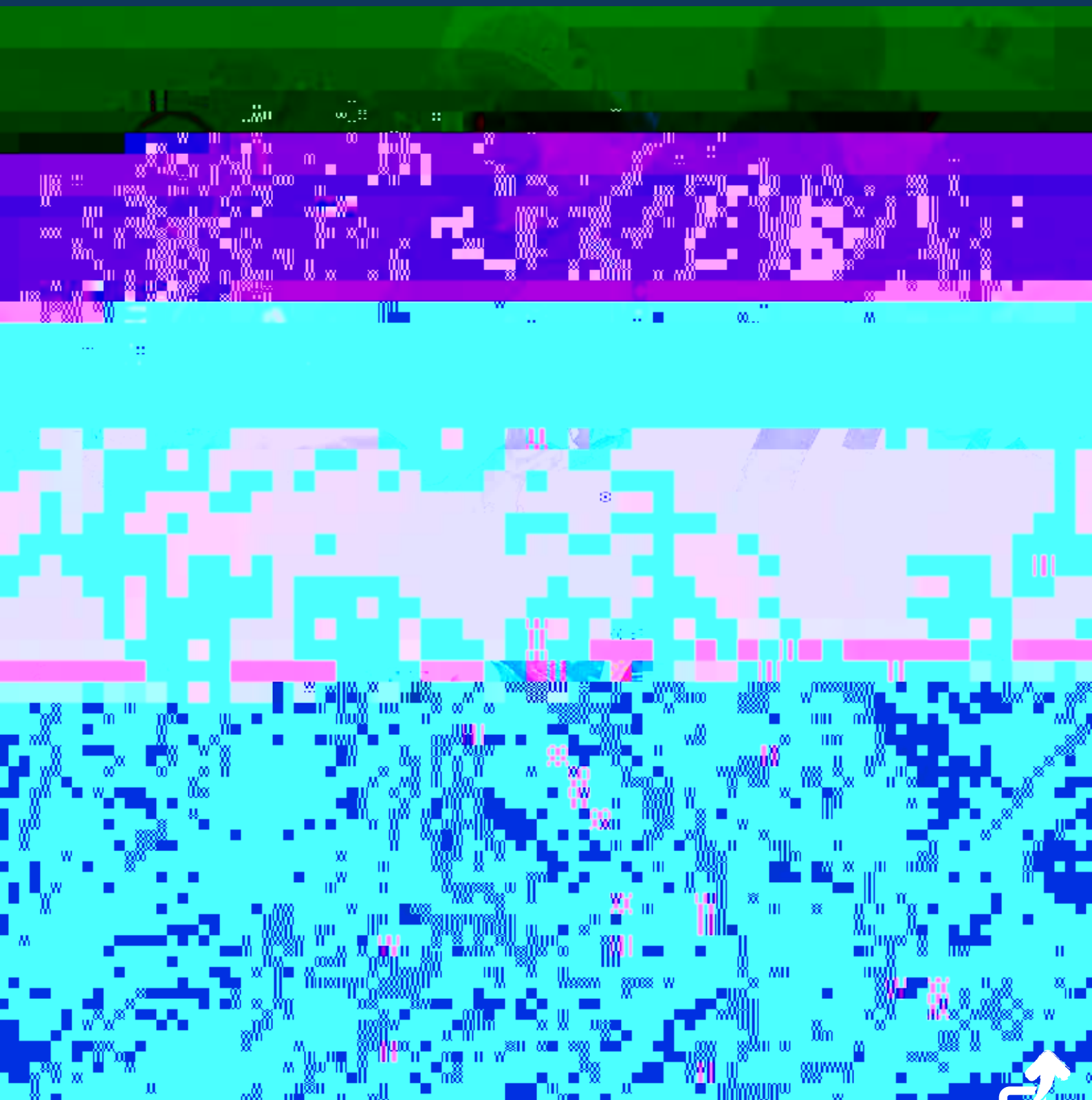


Table 4.2 Travel modes by school type	22
Table 4.3 Travel modes by age band and school type	22
5 Aberdeenshire	23
Table 5.1 Breakdown of travel modes to nursery at the Local Authority level	23
Table 5.2 Breakdown of travel modes at the Local Authority level	23
Table 5.3 Travel modes by school type	23
Table 5.4 Travel modes by age band and school type	24
6 Angus	25
Table 6.1 Breakdown of travel modes to nursery at the Local Authority level	25
Table 6.2 Breakdown of travel modes at the Local Authority level	25
Table 6.3 Travel modes by school type	25
Table 6.4 Travel modes by age band and school type	26
7 Argyll & Bute	27

10 East Ayrshire 32

Table 10.1 Breakdown of travel modes to nursery at the Local Authority level 32

Table 10.2 Breakdown of travel modes at the Local Authority level 32

Table 10.3 Travel modes by school type 32

Table 10.4 Travel modes by age band and school type 33

11 East Dunbartonshire 34

Table 11.1 Breakdown of travel modes to nursery at the Local Authority level 34

Table 11.2 Breakdown of travel modes at the Local Authority level 34

Table 11.3 Travel modes by school type 34

Table 11.4 Travel modes by age band and school type 35

12 East Lothian 36

Table 12.1 Breakdown of travel modes to nursery at the Local Authority level 36

Table 12.2 Breakdown of travel modes at the Local Authority level 36

Table 12.3 Travel modes by school type 36

13 East Renfrewshire 37

Table 13.1 Breakdown of travel modes to nursery at the Local Authority level 37

Table 13.2 Breakdown of travel modes at the Local Authority level 37

Table 13.3 Travel modes by school type 37

Table 13.4 Travel modes by age band and school type 38

14 Edinburgh City 39

Table 14.1 Breakdown of travel modes at the Local Authority level 39y at the Local A

25 Perth & Kinross	56
Table 25.1 Breakdown of travel modes to nursery at the Local Authority level	56
Table 25.2 Breakdown of travel modes at the Local Authority level	56
Table 25.3 Travel modes by school type	56
Table 25.4 Travel modes by age band and school type	57
26 Renfrewshire	58
Table 26.1 Breakdown of travel modes at the Local Authority level	58
Table 26.2 Travel modes by school type	58
Table 26.3 Travel modes by age band and school type	58
27 Scottish Borders	

30 South Lanarkshire	64
Table 30.1 Breakdown of travel modes to nursery at the Local Authority level	64
Table 30.2 Breakdown of travel modes at the Local Authority level	64
Table 30.3 Travel modes by school type	64
Table 30.4 Travel modes by age band and school type	65
31 Stirling	66
Table 31.1 Breakdown of travel modes at the Local Authority level	66
Table 31.2 Travel modes by school type	66
Table 31.3 Travel modes by age band and school type	66
32 West Dunbartonshire	67
Table 33.1 Breakdown of travel modes at the Local Authority level	67
Table 33.2 Travel modes by school type	67
Table 33.3 Travel modes by age band and school type	67
33 Western Isles	68
Table 33.1 Breakdown of travel modes at the Local Authority level	68
Table 33.2 Travel modes by school type	68
Table 33.3 Travel modes by age band and school type	68
34 West Lothian	69
Table 34.1 Breakdown of travel modes to nursery at the Local Authority level	69
Table 34.2 Breakdown of travel modes at the Local Authority level	69
Table 34.3 Travel modes by school type	69
Table 34.4 Travel modes by age band and school type	70

Hands-Up Scotland

Executive Summary

The 2008 National Hands-Up Survey was the first national dataset designed to look at mode of travel to school across Scotland. In 2009 the survey was repeated using the same methodology. In both years the question 'How do you normally travel to school?' was asked over the same one week period in September. The survey is a joint project between School Travel C0.0068 Tw0003 s60003 (period c 0 TD 0.0068

1.4 Nursery data

In 2009, the option for Local Authorities to collect additional data from nursery schools was provided. It should be noted that nursery data is presented separately throughout this report, and has not been included in the overall data at national and Local Authority level.

Table 1.1 School sample numbers on which analysis is based

	Year	Received Survey	Returned Data	Split by Class
Nursery*	2009	306	238	No class split possible
Primary Schools	2008	2029	1587	1352
			78.2%	66.6%
	2009	1980	1658	1199
			83.7%	60.6%
Secondary Schools	2008	334	219	154
			65.6%	46.1%
	2009	317	251	198
			79.2%	62.5%
Independent Schools	2008	37	13	8
			35.1%	21.6%
	2009	21	11	6
			52.4%	28.6%
SEN Schools	2008	7	5	2
			71.4%	28.6%
	2009	43	19	4
			44.2%	9.3%
All Schools	2008	2407	1824	1516
			75.8%	63.0%
	2009	2361	1939	1407
			82.1%	59.6%

* please note that 2009 is the first year that data has been collected from nursery schools

Table 1.3 Change in sample size at the Local Authority Level

Local Authority	Overall			% of total LA school roll	
	2008	2009	Change (n) (%)	2008	2009
Aberdeen City					

Table 1.4 Change in sample size for Primary Schools at the Local Authority Level

Local Authority	Overall				% of total LA school roll	
	2008	2009	Change (n) (%)		2008	2009
Aberdeen City	10579	9616	-963	-10.0%	87.6%	81.8%
Aberdeenshire	17205	16238	-967	-6.0%	90.2%	85.1%
Angus	6790	6767	-23	-0.3%	77.8%	79.3%
Argyll and Bute	4367	4041	-326	-8.1%	71.4%	67.4%
Clackmannanshire	1978	-	-	-	51.2%	-
Dumfries and Galloway	6942	8005	1063	13.3%	66.3%	77.1%
Dundee City	7696	6784	-912	-13.4%	80.4%	71.6%
East Ayrshire	8425	7878	-547	-6.9%	93.8%	88.9%
East Dunbartonshire	-	7394	-	-	-	89.6%
East Lothian	7268	7128	-140	-2.0%	98.5%	96.7%
East Renfrewshire	7588	6947	-641	-9.2%	91.7%	84.2%
Edinburgh City	13147	5879	-7268	-55.3%	53.4%	24.0%
Falkirk	8122	8175	53	0.6%	70.9%	71.9%
Fife	23289	21919	-1370	-6.3%	87.8%	83.0%
Glasgow City	26565	21127	-5438	-25.7%	72.0%	57.8%
Highland	11558	9294	-2264	-24.4%	98.2%	55.3%

Table 1.4 Change in sample size for Primary Schools at the Local Authority Level

Local Authority	Overall				% of total LA school roll	
	2008	2009	Change (n) (%)		2008	2009
Inverclyde	5240	5266	26	0.5%	92.6%	94.8%
Midlothian	5824	5537	-287	-5.2%	92.7%	87.7%
Moray	5460	6263	803	12.8%	79.9%	95.9%
North Ayrshire	7389	7724	335	4.3%	71.8%	76.5%
North Lanarkshire	8708	24873	16165	65.0%	32.7%	93.9%
Orkney Islands	635	1265	630	49.8%	45.2%	91.6%
Perth and Kinross	7247	7105	-142	-2.0%	73.1%	72.6%
Renfrewshire	11921	12023	102	0.8%	93.3%	95.6%
Scottish Borders	7905	7855	-50	-0.6%	95.3%	95.9%
Shetland Islands	1599	1722	123	7.1%	87.4%	95.4%
South Ayrshire	3786	3270	-516	-15.8%	48.4%	42.4%
South Lanarkshire	18496	17358	-1138	-6.6%	78.3%	74.1%
Stirling	4954	3648	-1306	-35.8%	75.3%	56.6%
West Dunbartonshire	-	4668	-	-	-	70.5%
Western Isles	-	1077	-	-	-	56.3%
West Lothian	9822	11396	1574	13.8%	68.1%	79.2%

Table 1.5 Change in sample size for Secondary Schools at the Local Authority

Local Authority	Overall				% of total LA school roll	
	2008	2009	Change (n)	Change (%)	2008	2009
Inverclyde	1835	2563	728	28.4%	37.0%	52.0%
Midlothian	4108	3640	-468	-12.8%	77.0%	69.0%
Moray	4237	3988	-249	-6.2%	74.0%	69.0%
North Ayrshire	3352	3915	563	14.4%	39.0%	46.0%
North Lanarkshire	2318	18293	15975	87.3%	11.0%	85.0%
Orkney	413	1114	701	62.9%	30.0%	80.0%
Perth and Kinross	3009	4718	1709	36.2%	39.0%	61.0%
Renfrewshire	8688	8670	-18	-0.2%	79.0%	80.0%
Scottish Borders	5824	5124	-700	-13.7%	85.0%	74.0%
Shetland Islands	688	690	2	0.3%	44.0%	45.0%
South Ayrshire	2022	2354	332	14.1%	29.0%	34.0%
South Lanarkshire						

Table 1.6 Change in sample size for Independent Schools at the Local Authority Level

Local Authority	Overall				% of total LA school roll	
	2008	2009	Change (n)	Change (%)	2008	2009
Aberdeen City	-	-	-	-	-	--
Aberdeenshire	-	-	-	-	-	-
Angus	-	-	-	-	-	-
Argyll and Bute	-	-	-	-	-	-
Clackmannanshire	-	-	-	-	-	-
Dumfries and Galloway	-	-	-	-	-	-
Dundee City	-	-	-	-	-	-
East Ayrshire	-	-	-	-	-	-
East Dunbartonshire	-	-	-	-	-	-
East Lothian	-	-	-	-	-	-

Table 1.6 Change in sample size for Independent Schools at the Local Authority Level

Local Authority	Overall				% of total LA school roll	
	2008	2009	Change (n)	Change (%)	2008	2009
Inverclyde	390	428	38	8.9%	49.7%	53.9%
Midlothian	-	-	-	-	-	-

3Tj ET

Table 1.7 Change in sample size for SEN schools at the Local Authority Level

Local Authority	Overall		% of total LA school roll
	2008	2009	

Table 1.7 Change in sample size for SEN schools at the Local Authority Level

Local Authority	Overall				% of total LA school roll	
	2008	2009	Change (n) (%)		2008	2009
Inverclyde	6	6	-	0.0%	4.2%	4.1%
Midlothian	-	-	-	-	-	-
Moray	-	-	-	-	-	-
North Ayrshire	60	60	-	0.0%	36.4%	36.4%
North Lanarkshire	-	-	-	-	-	-
Orkney Islands	-	10	-	-	-	62.5%
Perth and Kinross	-	-	-	-	-	-
Renfrewshire	-	-	-	-	-	-
Scottish Borders	-	-	-	-	-	-
Shetland Islands	-	20	-	-	-	80.0%
South Ayrshire	-	-	-	-	-	-
South Lanarkshire	-	135	-	-	-	41.9%
Stirling	-	-	-	-	-	-
West Dunbartonshire	-	-	-	-	-	-
Western Isles	-	-	-	-	-	-
West Lothian	-	50	-	-	-	22.8%

A detailed methodology is available on the website in our Technical Note. If you have any questions please email alex.bulmer@sustrans.org.uk

2 National Results

Table 2.1 Breakdown of travel modes to nursery at a national level

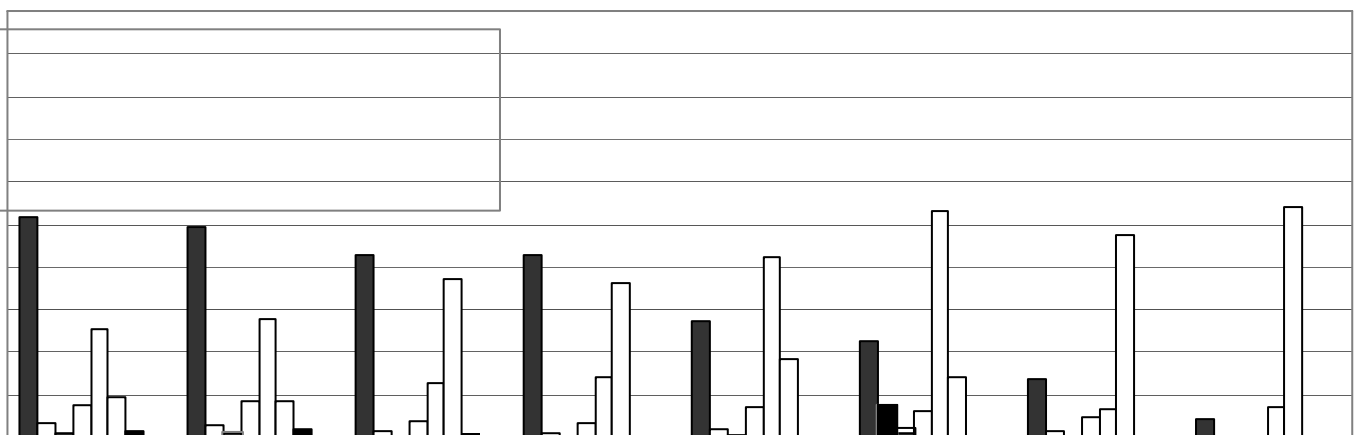
Year	Walk	Cycle	Scooter/ skate	Park& Stride
------	------	-------	-------------------	-----------------

Table 2.2 Breakdown of travel modes at a national level

Year	Walk	Cycle	Scooter/ skate	Park& Stride	Driven	Bus	Taxi	Other	Total
2008	48.3%	2.8%	0.7%	6.1%	22.0%	18.2%	1.4%	0.5%	396377
2009	47.0%	2.3%	0.6%	6.7%	23.3%	18.1%	1.6%	0.4%	415804

Table 2.3 Travel modes by school type

School Type	Year	Walk	Cycle	Scooter/skate	Park & Stride	Driven	Bus	Taxi	Other	Total
Primary Schools	2008	51.6%	3.4%	1.0%	7.4%	26.1%	8.7%	1.6%	0.2%	260505
	2009	49.5%	3.0%	0.8%	8.4%	27.9%	8.5%	1.7%	0.2%	268242
Secondary Schools	2008	42.8%	1.6%	0.2%	3.6%	12.7%	37.2%	1.0%	0.9%	129161
	2009	42.8%	1.2%	0.2%	3.5%	14.3%	35.9%	1.2%	0.9%	144436
Independent Schools	2008	27.2%	1.9%	0.6%	7.1%	42.4%	18.3%	0.4%	2.0%	6578
	2009	22.6%	1.6%	1.0%	6.3%	53.1%	14.3%	0.2%	0.9%	2686
SEN Schools	2008	13.5%	*	0.0%	4.5%	6.8%	47.4%	26.3%	*	133
	2009	4.3%	*	0.0%	*	7.3%	54.1%	33.9%	0.0%	440



3 Summary of Local Authority Data

Table 3.1 Breakdown of travel modes at the Local Authority level

Local Authority	Year	Walk	Cycle	Scooter/ skate	Park & Stride	Driven	Bus	Taxi	Other	Total
Aberdeen City	2008	62.4%	2.1%	1.1%	6.6%	16.5%	10.3%	0.9%	0.2%	16400
	2009	61.4%	2.3%	0.9%	6.3%	16.2%	11.7%	1.1%	0.1%	16285
Aberdeenshire	2008	42.5%	3.1%	0.5%	5.7%	19.3%	27.2%	1.4%	0.2%	28935
	2009	41.3%	2.9%	0.6%	6.1%	20.5%	27.0%	1.4%	0.2%	27165
Angus	2008	50.3%	3.3%	0.3%	6.4%	21.3%	16.8%	1.4%	0.2%	9937
	2009	55.0%	2.8%	0.3%	5.4%	20.3%	14.5%	1.4%	0.3%	11297
Argyll and Bute	2008	37.7%	3.1%	0.3%	6.2%	25.5%	24.5%	2.2%	0.5%	4534
	2009	36.6%	2.0%	0.2%	6.3%	24.6%	27.3%	2.1%	0.9%	5639
Dumfries and Galloway	2008	44.9%	4.0%	0.3%	7.1%	26.1%	15.1%	2.4%	0.1%	8978
	2009	40.7%	2.2%	0.4%	8.0%	23.6%	23.3%	1.7%	0.1%	12087
Dundee City	2008	54.3%	1.5%	0.4%	9.6%	25.1%	6.6%	1.5%	0.8%	11354
	2009	56.1%	0.7%	0.4%	6.8%	29.9%	4.2%	1.3%	0.5%	6784
East Ayrshire	2008	44.8%	1.6%	0.4%	4.9%	24.1%	21.3%	2.7%	0.1%	12810
	2009	43.4%	1.5%	0.2%	4.9%	27.5%	19.7%	2.8%	0.1%	12268
East Dunbartonshire	2008	-	-	-	-	-	-	-	-	-
	2009	49.0%	2.1%	0.4%	11.1%	23.3%	12.3%	1.4%	0.5%	10313
East Lothian	2008	58.3%	5.4%	1.1%	4.3%	14.4%	15.9%	*	*	12491
	2009	59.6%	6.4%	1.5%	5.6%	11.8%	14.1%	1.0%	0.1%	11948
East Renfrewshire	2008	38.7%	1.4%	0.5%	13.1%	34.4%	10.0%	0.8%	1.1%	11882
	2009	37.4%	1.2%	0.3%	11.4%	36.3%	12.2%	0.7%	0.5%	9580

Hands-Up Scotland 2009

Table 3.1 Breakdown of travel modes at the Local Authority level

Local Authority	Year	Walk	Cycle	Scooter/ skate	Park & Stride	Driven
-----------------	------	------	-------	-------------------	------------------	--------

4 Aberdeen City

Table 4.1 Breakdown of travel modes at the Local Authority Level

Year	Walk	Cycle	Scooter/ skate	Park & Stride	Driven	Bus	Taxi	Other	Total
2008	62.4%	2.1%	1.1%	6.6%	16.5%	10.3%	0.9%	0.2%	16400
2009	61.4%	2.3%	0.9%	6.3%	16.2%	11.7%	1.1%	0.1%	16285

Table 4.2 Travel modes by school type

School Type	Year	Walk	Cycle	Scooter/ r/skate	Park & Stride	Driven	Bus	Taxi	Other	Total
	2008	57.4%	2.7%	*	5.0%	10.6%	23.2%	0.9%	*	5821
	2009	58.2%	2.1%	0.3%	4.3%	10.3%	23.9%	0.7%	0.1%	6669

Table 4.3 Travel modes by age band and school type

School Type	Year	Walk	Cycle	Scooter/ skate	Park & Stride	Driven	Bus	Taxi	Other	Total
	2009	67.9%	2.6%	*	8.7%	15.1%	3.5%	1.4%	*	3554
Secondary 1-3	2008	54.0%	3.5%	0.0%	5.2%	10.0%	26.0%	1.0%	0.2%	3210
	2009	57.4%	2.4%	*	4.7%	9.1%	25.5%	0.7%	*	3683
Secondary 4-6	2008	56.0%	2.0%	*	2.8%	12.5%	25.6%	1.0%	*	1812
	2009	55.7%	1.9%	*	4.0%	12.2%	24.6%	0.7%	*	2309

6 Angus

Table 6.1 Breakdown of travel modes to nursery at a local level

Nursery									
Year	Walk	Cycle	Scooter/ skate	Park& Stride	Driven	Bus	Taxi	Other	Total
2009	59.6%	5.8%	*	0.0%	32.1%	0.0%	0.0%	*	156

Table 6.2 Breakdown of travel modes at the Local Authority Level

Year	Walk	Cycle	Scooter/ skate	Park& Stride	Driven	Bus	Taxi	Other	Total
2008	50.3%	3.3%	0.3%	6.4%	21.3%	16.8%	1.4%	0.2%	9937
2009	55.0%	2.8%	0.3%	5.4%	20.3%	14.5%	1.4%	0.3%	11297

Table 6.3 Travel modes by school type



Table 6.4 Travel modes by age band and school type

School Type	Year	Walk	Cycle	Scooter/ skate	Park & Stride	Driven	Bus	Taxi	Other	Total
Primary 1-4	2008	49.1%	1.3%	*	7.0%	28.9%	11.1%	1.8%	*	3801
	2009	56.0%	1.0%	0.4%	7.4%	29.3%	4.2%	1.5%	0.2%	3561
Primary 5-7	2008	55.9%	3.6%	0.2%	7.9%	19.3%	11.3%	1.6%	0.2%	2919
	2009	61.1%	5.0%	*	7.4%	19.0%	5.6%	1.6%	*	2642
Secondary 1-3	2008	45.9%	7.0%	*	4.6%	12.8%	28.9%	0.7%	*	2015
	2009	55.4%	4.1%	*	3.4%	10.5%	25.4%	0.9%	*	2645
Secondary 4-6	2008	49.6%	2.6%	*	3.9%	15.2%	27.6%	*	0.6%	1132
	2009	55.7%	1.8%	0.3%	2.5%	12.9%	24.8%	1.5%	0.5%	1885

School Type	Year	Walk	Cycle	Scooter/ skate	Park &
-------------	------	------	-------	-------------------	--------

8 Dumfries & Galloway

Table 8.1 Breakdown of travel modes to nursery at a local level

Table 8.2 Breakdown of travel modes at the Local Authority Level

School Type	Year	Walk	Cycle	Scooter/ skate	Park & Stride	Driven	Bus	Taxi	Other	Total
Primary 1-4	2008	44.0%	2.3%	*	6.8%	34.1%	9.7%	2.5%	*	3904
	2009	44.6%	1.5%	0.3%	9.5%	33.2%	9.4%	1.7%	0.0%	2469
Primary 5-7	2008	47.3%	7.2%	0.3%	6.5%	24.9%	11.8%	2.0%	0.0%	2866
	2009	47.9%	3.1%	*	9.4%	25.2%	12.6%	1.6%	*	1882
Secondary 1-3	2008	42.5%	3.1%	*	9.6%	10.4%	32.6%	1.7%	*	1171
	2009	37.9%	1.6%	*	5.8%	8.5%	45.0%	1.1%	*	2375
Secondary 4-6	2008	45.0%	2.3%	*	7.6%	14.1%	28.0%	2.7%	*	865
	2009	35.4%	1.0%	*	4.6%	11.6%	45.8%	0.9%	*	1707

Table 9.1 Breakdown of travel mode

East Ayrshire

0.1 Breakdown of travel modes to nursery at a local level

Nursery									
Year	Walk	Cycle	Scooter/ skate	Park & Stride	Driven	Bus	Taxi	Other	Total
2009	41.1%	0.9%	*	3.5%	48.4%	2.2%	2.8%	*	964

Table 10.2 Breakdown of travel modes at the Local Authority Level

Walk	Cycle	Scooter/ skate	Park & Stride	Driven	Bus	Taxi	Other	Total
44.8%	1.6%	0.4%	4.9%	24.4%	44.8%	3		

Table 10.3 Travel modes by school type

School Type	Year	Walk	Cycle	Scooter/ skate	Park & Stride	Driven	Bus	Taxi	Other	Total
-------------	------	------	-------	-------------------	------------------	--------	-----	------	-------	-------

11 East Dunbartonshire

Table 11.1 Breakdown of travel modes to nursery at a local level

Table 11.2 Breakdown of travel modes at the Local Authority Level

12 East Lothian

Table 12.1 Breakdown of travel modes to nursery at a local level

Nursery									
Year	Walk	Cycle	Scooter/ skate	Park& Stride	Driven	Bus	Taxi	Other	Total
2009	43.8%	*	0.0%	0.0%	50.0%	3.8%	0.0%	*	160

Table 12.2 Breakdown of travel modes at the Local Authority Level

Year	Walk	Cycle	Scooter/ skate	Park& Stride	Driven	Bus	Taxi	Other	Total
	58.3%	5.4%	1.1%	4.3%	14.4%	15.9%	*	*	12491
	59.6%	6.4%	1.5%	5.6%	11.8%	14.1%	1.0%	0.1%	11948

Table 12.3 Travel modes by school type

13 East Renfrewshire

Table 13.1 Breakdown of travel modes to nursery at a local level



Table 13.2 Breakdown of travel modes at the Local Authority Level

Table 13.3 Travel modes by school type

School Type	Year	Walk	Cycle	Scooter/ skate	Park & Stride	Driven	Bus	Taxi	Other	Total
Primary 1-4	2008	37.1%	1.6%	1.2%	16.5%	37.				

14 Edinburgh City

Table 14.1 Breakdown of travel modes at the Local Authority Level

Walk	Cycle	Scooter/ skate	Park & Stride	Driven	Bus	Taxi	Other	Total
51.5%	3.3%	1.6%	5.0%	21.0%	13.8%	0.7%	0.0%	100.0%

Table 14.2 Travel modes by school type

15 Falkirk

Table 15.1 Breakdown of travel modes at the Local Authority Level

Year	Walk	Cycle	Scooter/ skate	Park & Stride	Driven	Bus	Taxi	Other	Total
2008	49.4%	3.2%	0.9%	7.1%	31.4%	6.4%	1.7%	0.0%	8122
2009	45.3%	2.7%	*	7.7%	34.8%	6.6%	1.9%	*	8175

Table 15.2 Travel modes by school type

School Type	Year	Walk	Cycle	Scooter/ skate	Park & Stride	Driven	Bus	Taxi	Other	Total
Primary Schools	2008	49.4%	3.2%	0.9%	7.1%	31.4%	6.4%	1.7%	0.0%	8122
	2009	45.3%	2.7%	*	7.7%	34.8%	6.6%	1.9%	*	8175

School Type	Year	Walk	Cycle	Scooter/ skate	Park & Stride	Driven	Bus	Taxi	Other	Total
Primary 1-4	2008	48.9%	1.9%	1.0%	5.6%	34.6%	6.2%	1.7%	0.0%	4541
	2009	41.0%	2.2%	1.4%	7.3%	39.9%	6.3%	1.9%	0.0%	4316
Primary 5-7	2008	50.0%	4.7%	0.7%	9.1%	27.2%	6.6%	1.6%	0.0%	3581
	2009	47.9%	2.9%	1.3%	10.0%	30.8%	8.5%	1.8%	6.2%	2873.6

16 Fife

Table 16.1 Breakdown of travel modes to nursery at a local level

Nursery									
Year	Walk	Cycle	Scooter/ skate	Park & Stride	Driven	Bus	Taxi	Other	Total
2009	39.2%	1.4%	*	7.0%	48.2%	2.3%	1.1%	*	1890

Table 16.2 Breakdown of travel modes at the Local Authority Level

Year	Walk	Cycle	Scooter/ skate	Park & Stride	Driven	Bus	Taxi	Other	Total
2008	45.7%	2.6%	0.8%	5.3%	20.3%	24.0%	1.1%	0.2%	35924
2009	43.3%	1.2%	0.4%	8.3%	25.1%	20.1%	1.5%	0.2%	31581

Table 16.3 Travel modes by school type

School Type	Year	Walk	Cycle	Scooter/ skate	Park & Stride	Driven	Bus	Taxi	Other	Total
Primary Schools	2008	53.4%	3.5%	1.2%	7.6%	25.9%	7.0%	1.3%	0.2%	23289
	2009	47.5%	1.3%	0.5%	11.0%	30.8%	7.1%	1.6%	0.1%	21919
Secondary Schools	2008	31.5%	1.0%	0.1%	1.0%	10.0%	55.3%	0.8%	0.3%	12635
	2009	33.8%	0.8%	0.1%	2.1%	12.0%	49.6%	1.2%	0.3%	9662

17 Glasgow City

Table 17.1 Breakdown of travel modes at the Local Authority Level

Year	Walk	Cycle	Scooter/ skate	Park & Stride	Driven	Bus	Taxi	Other	Total
2008	55.7%	1.4%	0.4%	4.0%	26.0%	9.5%	1.5%	1.4%	33120
2009	52.1%	1.5%	0.5%	6.6%	26.0%	10.3%	1.1%	1.8%	30214

Table 17.2 Travel modes by school type

School Type	Year	Walk	Cycle	Scooter/ skate	Park & Stride	Driven	Bus	Taxi	Other	Total
Primary Schools	2008	58.2%	1.6%	0.5%	4.0%	28.2%	5.5%	1.6%	0.3%	26565
	2009	54.1%	1.9%	0.6%	7.4%	28.9%	5.3%	1.3%	0.5%	21127
Secondary Schools	2008	45.5%	*	*	4.1%	17.4%	25.4%	1.0%	6.1%	6555
	2009	47.6%	0.5%	0.3%	5.0%	19.1%	22.0%	0.7%	4.8%	9087

Table 17.3 Travel modes by age band and school type

School Type	Year	Walk	Cycle	Scooter/ skate	Park & Stride	Driven	Bus	Taxi	Other	Total
Primary 1-4	2008	57.4%	1.5%	0.8%	3.5%	29.4%	5.4%	1.8%	0.3%	14951
	2009	53.2%	1.9%	0.9%	6.3%	30.3%	5.5%	1.4%	0.5%	11985
Primary 5-7	2008	59.1%	1.8%	0.2%	4.9%	26.7%	5.7%	1.4%	0.2%	11004
	2009	56.0%	1.9%	0.2%	8.8%	26.5%	5.0%	1.2%	0.4%	8526
Secondary 1-3	2008	49.5%	*	*	4.6%	16.3%	23.3%	1.2%	4.4%	3216
	2009	48.0%	0.7%	0.4%	5.7%	17.4%	22.1%	0.8%	4.9%	5762
Secondary 4-6	2008	52.0%	*	*	2.8%	16.7%	22.0%	0.8%	5.1%	2269
	2009	45.8%	0.2%	0.0%	4.0%	22.7%	22.0%	0.7%	4.7%	3178

18 Highland

Table 18.1 Breakdown of travel modes at the Local Authority Level

Year	Walk	Cycle	Scooter/ skate	Park& Stride	Driven	Bus	Taxi	Other	Total
	39.8%	8.3%	0.7%	6.8%	21.4%	20.8%	1.6%	0.5%	16374
	40.0%	7.2%	0.7%	5.4%	20.2%	23.9%	2.4%	0.2%	15151

Table 18.2 Travel modes by school type

School Type	Year	Walk	Cycle	Scooter/ skate	Park & Stride	Driven	Bus	Taxi	Other	Total
Primary 1-4	2008	50.3%	*	0.0%	0.0%	36.9%	11.0%	1.8%	*	2861
	2009	48.0%	*	0.2%	16.1%	24.9%	8.9%	1.8%	*	2696
Primary 5-7	2008	51.3%	1.8%	0.0%	*	33.6%	12.0%	1.2%	*	2379
	2009	49.0%	1.8%	0.0%	13.6%	24.0%	10.4%	1.2%	0.0%	2199
Secondary 1-3	2008	46.5%	0.0%	0.0%	2.7%	21.8%	26.9%	1.2%	0.9%	1002
	2009	46.0%	0.0%	0.0%	7.5%	20.6%	23.6%	1.1%	1.1%	1236
Secondary 4-6	2008	47.1%	0.0%	*	*	29.2%	19.7%	2.2%	1.8%	833
	2009	44.8%	0.0%	0.0%	3.1%	24.2%	24.7%	1.1%	2.0%	978
Independent Primary 1-4	2008	16.7%	*	0.0%	0.0%	72.7%	9.3%	0.0%	*	227
	2009	14.7%	0.0%	0.0%	0.0%	22.2%	50.8%	1.5%	18.7%	218

1-4

20 Midlothian

Table 20.1 Breakdown of travel modes at the Local Authority Level

Year	Walk	Cycle	Scooter/ skate	Park& Stride	Driven	Bus	Taxi	Other	Total
2008	56.5%	3.5%	1.0%	5.6%	15.4%	16.8%	1.1%	0.1%	9932
2009	54.8%	2.7%	1.0%	5.6%	16.6%	18.2%	1.1%	0.1%	9177

Table 20.2 Travel modes by school type

School Type	Year	Walk	Cycle	Scooter/ skate	Park& Stride	Driven	Bus	Taxi	Other	Total
Primary Schools	2008	59.5%	5.1%	1.6%	8.1%	19.0%	5.1%	1.4%	0.1%	5824
	2009	60.5%	4.0%	1.5%	7.3%	21.6%	3.9%	*	*	5537
Secondary Schools	2008	52.2%	1.1%	0.1%	2.1%	10.2%	33.5%	0.6%	0.2%	4108
	2009	46.0%	0.6%	0.4%	2.9%	9.0%	39.8%	1.1%	0.2%	3640

21 Moray

Table 21.1 Breakdown of travel modes to nursery at a local level

Year	Walk	Cycle
------	------	-------

Table 21.2 Breakdown of travel modes at the Local Authority Level

Table 21.3 Travel modes by school type

School Type	Year	Walk	Cycle	Scooter/ skate	Park & Stride	Driven	Bus	Taxi	Other	Total
Primary 1-4	2008	47.7%	4.9%	1.1%	8.3%	25.2%	9.6%	2.5%	0.7%	2762
	2009	47.4%	6.0%	1.2%	7.8%	27.2%	7.9%	2.3%	0.2%	2571
Primary 5-7	2008	52.8%	10.7%	*	8.1%	15.9%	9.5%	2.2%	*	2132
	2009	53.7%	9.1%	*	6.6%	18.2%	9.9%	2.0%	*	1983
Secondary 1-3	2008	41.4%	4.8%	1.0%	2.1%	15.1%	34.2%	1.5%	0.0%	816
	2009	43.8%	7.0%	*	8.2%	14.8%	23.9%	1.6%	*	961
Secondary 4-6	2008	28.2%	3.0%	*	8.8%	23.8%	25.0%	*	9.3%	432
	2009	48.5%	8.5%	*	4.3%	12.4%	24.2%	0.9%	*	740

22 North Ayrshire

Table 22.1 Breakdown of travel modes to nursery at a local level

Nursery									
Year	Walk	Cycle	Scooter/ skate	Park& Stride	Driven	Bus	Taxi	Other	Total
2009	56.4%	0.0%	0.0%	0.0%	39.2%	2.9%	*	*	204

Table 22.2 Breakdown of travel modes at the Local Authority Level

Year	Walk	Cycle	Scooter/ skate	Park& Stride	Driven	Bus	Taxi	Other	Total
	51.6%	2.9%	0.6%	5.9%	21.3%	16.0%	1.5%	0.2%	10801
	45.0%	2.6%	0.7%	5.1%	25.6%	19.4%	1.5%	0.1%	11699

Table 22.3 Travel modes by school type

School Type	Year	Walk	Cycle	Scooter/ skate	Park & Stride	Driven	Bus	Taxi	Other	Total
Primary 1-4	2008	49.0%	3.5%	1.3%	7.5%	29.4%	7.7%	1.4%	0.2%	3991
	2009	49.3%	3.1%	*	7.7%	30.3%	5.8%	2.1%	*	3849
Primary 5-7	2008	53.8%	5.2%	*	7.9%	23.0%	8.5%	1.4%	*	2857
	2009	56.4%	4.7%	*	7.3%	22.0%	7.7%	1.2%	*	2704
Secondary 1-3	2008	51.6%	0.8%	*	3.1%	10.2%	32.9%	0.9%	*	1692
	2009	33.7%	1.3%	*	2.5%	21.5%	40.0%	0.8%	*	1865
Secondary 4-6	2008	54.8%	0.0%	0.5%	1.5%	8.7%	33.5%	0.5%	0.5%	1111
	2009	33.8%	0.5%	1.1%	1.5%	21.6%	40.9%	*	*	1237

23 North Lanarkshire

Table 23.1 Breakdown of travel mo

24 Orkney Islands

Table 24.1 Breakdown of travel modes at the Local Authority Level

Walk	Cycle
------	-------

Table 24.2 Travel modes by school type

25 Perth & Kinross

Table 25.1 Breakdown of travel modes to nursery at a local level

Year	Walk	Cycle	Scooter/ skate	Park & Stride	Driven	Bus	Taxi	Other	Total
2009	26.0%	*	0.0%	*	52.0%	16.0%	0.0%	0.0%	50

Table 25.2 Breakdown of travel modes at the Local Authority Level

Table 25.3 Travel modes by school type

Table 25.4 Travel modes by age band and school type

School Type	Year	Walk	Cycle	Scooter/ skate	Park & Stride	Driven	Bus	Taxi	Other	Total
Primary 1-4	2008	-	-	-	-	-	-	-	-	-
	2009	48.2%	3.3%	0.9%	8.2%	31.3%	6.4%	1.6%	0.2%	2764
Primary 5-7	2008	-	-	-	-	-	-	-	-	-
	2009	56.2%	3.6%	*	9.7%	19.6%	7.3%	2.6%	*	1879
Secondary 1-3	2008	-	-	-	-	-	-	-	-	-
	2009	37.3%	1.0%	*	4.4%	8.3%	47.2%	1.4%	*	1344
Secondary 4-6	2008	-	-	-	-	-	-	-	-	-
	2009	39.8%	0.7%	*	2.5%	10.3%	44.3%	1.5%	*	874

26 Renfrewshire

Table 26.1 Breakdown of travel modes at the Local Authority Level

Year	Walk	Cycle	Scooter/ skate	Park & Stride	Driven	Bus	Taxi	Other	Total
2008	47.6%	1.2%	0.2%	7.0%	19.8%	21.9%	1.1%	1.1%	20609
2009	47.0%	1.1%	0.2%	7.4%	21.5%	20.9%	1.2%	0.6%	20693

Table 26.2 Travel modes by school type

School Type	Year	Walk	Cycle	Scooter/ skate	Park & Stride	Driven	Bus	Taxi	Other	Total
Primary Schools	2008	52.1%	1.8%	0.3%	8.9%	23.6%	11.9%	1.1%	0.3%	11921
	2009	52.4%	1.5%	0.3%	10.0%	24.6%	9.9%	1.1%	0.1%	12023
Secondary Schools	2008	41.5%	*	*	4.5%	14.5%	35.6%	1.2%	2.2%	8688
	2009	39.5%	0.6%	0.1%	3.6%	17.3%	36.3%	1.4%	1.3%	8670



27 Scottish Boarders

Table 27.1 Breakdown of travel modes to nursery at a local level

Nursery									
Year	Walk	Cycle	Scooter/ skate	Park& Stride	Driven	Bus	Taxi	Other	Total
2009	48.3%	2.4%	2.2%	6.2%	39.9%	1.0%	0.0%	0.0%	955

Table 27.2 Breakdown of travel modes at the Local Authority Level

Walk	Cycle	Scooter/ skate	Park& Stride	Driven	Bus	Taxi	Other
------	-------	-------------------	-----------------	--------	-----	------	-------

Table 27.3 Travel modes by school type

School Type	Year	Walk	Cycle	Scooter/ skate	Park & Stride	Driven	Bus	Taxi	Other	Total
Primary 1-4	2008	23.7%	3.3%	1.0%	1.4%	33.2%	36.8%	0.7%	0.0%	734
	2009	30.2%	1.8%	*	2.5%	36.6%	26.0%	1.6%	*	557
Primary 5-7	2008	32.2%	5.7%	*	2.2%	25.6%	32.2%	1.3%	*	630
	2009	35.5%	2.8%	*	5.0%	26.7%	26.7%	1.4%	*	423
Secondary 1-3	2008	16.2%	1.4%	0.0%	1.0%	13.2%	66.8%	1.4%	0.0%	494
	2009	15.1%	*	0.0%	1.4%	18.8%	61.6%	2.2%	*	490
Secondary 4-6	2008	16.7%	*	0.0%	6.3%	17.7%	56.8%	0.0%	*	192
	2009	13.7%	*	0.0%	*	21				

29 South Ayrshire

Table 29.1 Breakdown of travel modes at the Local Authority Level

Year	Walk	Cycle	Scooter/ skate	Park& Stride	Driven	Bus	Taxi	Other	Total
2008	45.4%	3.2%	1.5%	11.7%	22.6%	13.3%	1.8%	0.5%	5808
2009									

Tab

30 South Lanarkshire

Table 30.1 Breakdown of travel modes to nursery at a local level

Nursery									
Year	Walk	Cycle	Scooter/ skate	Park & Stride	Driven	Bus	Taxi	Other	Total
2009	38.7%	*	0.9%	2.5%	49.2%	1.8%	6.1%	*	1213

Table 30.2 Breakdown of travel modes at the Local Authority Level

Year	Walk	Cycle	Scooter/ skate	Park & Stride	Driven	Bus	Taxi	Other	Total
2008	43.7%	1.4%	0.7%	4.7%	24.3%	22.9%	2.0%	0.5%	29398
2009	43.2%	0.9%	0.4%	8.7%	25.6%	18.7%	2.0%	0.5%	28605

Table 30.3 Travel modes by school type

School Type	Year	Walk	Cycle	Scooter/ skate	Park & Stride	Driven	Bus	Taxi	Other	Total
Primary Schools	2008	49.5%	2.0%	0.9%	5.5%	29.4%	10.0%	2.5%	0.2%	18496
	2009	45.5%	1.3%	0.5%	9.0%	31.7%	9.4%	2.2%	0.2%	17358
Secondary Schools	2008	35.7%	0.3%	0.2%	3.2%	12.5%	46.1%	1.1%	0.9%	10308
	2009	41.2%	0.3%	0.2%	8.5%	14.4%	33.2%	1.2%	1.0%	10758
Independent Schools	2008	1.7%	*	*	3.7%	68.9%	24.6%	*	*	594
	2009	5.4%	0.0%	0.0%	2.5%	73.2%	18.1%	*	*	354
SEN Schools	2008	-	-	-	-	-	-	-	-	-
	2009	0.0%	*	0.0%	0.0%	8.1%	57.0%	34.1%	*	135

32 West Dunbartonshire

34 West Lothian

Table 34.1 Breakdown of travel modes to nursery at a local level

Nursery									
Year	Walk	Cycle	Scooter/ skate	Park & Stride	Driven	Bus	Taxi	Other	Total
2009	49.4%	3.2%	1.8%	6.5%	36.8%	1.9%	*	*	723

Table 34.2 Breakdown of travel modes at the Local Authority Level

Year	Walk	Cycle	Scooter/ skate	Park & Stride	Driven	Bus	Taxi	Other	Total
2008	49.2%	3.0%	1.0%	8.4%	19.1%	17.9%	1.2%	0.2%	14573
2009	52.8%	3.2%	1.4%	8.4%	19.7%	13.0%	1.2%	0.4%	15850

Table 34.3 Travel modes by school type

School Type	Year	Walk	Cycle	Scooter/ skate	Park & Stride	Driven	Bus	Taxi	Other	Total
Primary Schools	2008	55.4%	4.0%	1.4%	10.3%	21.9%	5.6%	1.3%	0.2%	9822
	2009	55.8%	4.0%	1.9%	10.3%	22.3%	4.1%	1.2%	0.3%	11396
Secondary Schools	2008	36.5%	0.8%	*	4.7%	13.3%	43.5%	1.0%	0.2%	4751
	2009	45.5%	1.0%	0.1%	3.6%	13.2%	35.4%	0.6%	0.5%	4404
SEN Schools	2008	-	-	-	-	-	-	-	-	-
	2009	0.0%	0.0%	0.0%	0.0%	*	58.0%	38.0%	*	50

ARY]Kc] : / MVK]]
MKXv^]^K\^ K^ ^RO P\YX^

=_]^\KX] S] ^RO ?5v] VOKNSXQ]_]^KSXKLVO ^\KX]ZY\^ MRKV
ZOYZVO MRYY]O ^Y ^\K`OV SX aKc] ^RK^ LOXOPS^ ^ROS\ RO
^RO MRK\S^c aY\USXQ aS^R MRSVN\OX SX]MRYYV] aS^R P
aS^R MYWW_XS^SO] ^Y OXKLVO ZOYZVO ^Y ^\K`OV WY\O Lc

6XVWUDQV LV D GRLQJ FKDULW\ ZRUNLQJ ZLWK PDQ\ SDU
DERXW UHDO FKDQJH 2XU WKRXVDQGV RI VXSSRUWHUV K
XV WR FKDQJH RXU ZRUOG RQH PLOH DW D WLPH <R

4YSX ^RO WY`OWOX^ ^YNKc K^
aaa]_]^\KX] Y\Q _U]_ZZY\^